

HIGHWAY-RAIL GRADE CROSSINGS

EMERGENCY NOTIFICATION SYSTEM (ENS)

Get **HELP!** Use the **Blue** ENS Sign



Keeping Railroads and the Public Safe

The mission of the Federal Railroad Administration (FRA) is: To enable the safe, reliable and efficient movement of people and goods for a strong America, now and in the future.

Please visit our website at:
www.fra.dot.gov



U.S. Department of Transportation
Federal Railroad Administration

In Case of Emergency

1. **Locate** the blue and white Emergency Notification System (ENS) sign at the grade crossing.
2. **Call for help!** Call the railroad's emergency contact number listed on the blue sign.
3. **Communicate** your location, by providing the identification number (see below) and state the nature of the emergency to the dispatcher.

The ENS sign contains:



1. Each railroad's emergency contact number.
2. The U.S. Department of Transportation (USDOT) National Crossing Inventory Number which identifies the exact location of the crossing to the railroads.

Emergencies and safety concerns at the grade crossing should be reported by using the information on the ENS sign.



ABOUT THE FEDERAL RAILROAD ADMINISTRATION (FRA)

Our mission: *To enable the safe, reliable and efficient movement of people and goods for a strong America, now and in the future.*

Getting to know the FRA

- Created by an Act of Congress in 1966 (The Department of Transportation Act)
- FRA is one of ten agencies that make up the USDOT
- The FRA is led by an administrator, appointed by the President of the United States and confirmed by the United States Senate. FRA has eight regional offices across the nation
- Nationwide the agency employs a diverse workforce to support its mission

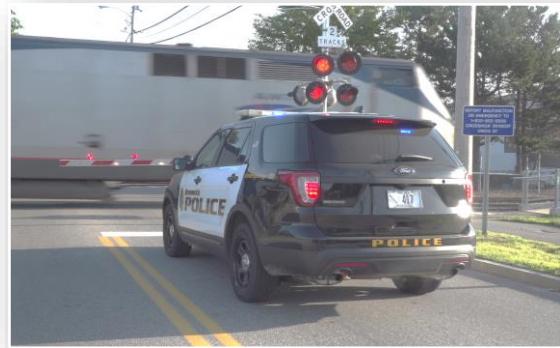
Keeping Railroads and the Public Safe

FRA is the chief safety regulator for all passenger and freight railroads nationwide. We accomplish our mission by:



- Continuing a rigorous oversight and inspection program based on strategic use of data
- Advancing proactive approaches for early identification and mitigation of risk
- Capital investments and robust research and development program

The FRA advances market-based rail improvements. Today we manage a portfolio that includes grants and loans, laying a solid foundation of sustainable, long-term rail improvements.



In order to improve highway-rail crossing safety, the FRA now requires each railroad to have an Emergency Notification System (ENS), allowing emergency response center staff to identify crossing locations and railroad contacts for reporting safety problems and emergency situations.

Look for a blue and white emergency notification sign. This sign should be posted near the crossing and be clearly visible. The ENS sign includes the name of the railroad, the railroad's emergency contact number and the USDOT National Crossing Inventory Number. Using the information on the ENS sign is the quickest way to notify the railroad.

A USDOT National Crossing Inventory Number is a unique number that is assigned to each grade crossing and can be used to obtain valuable information.

The National Law Enforcement Terminal Systems (NLETS) has joined the FRA to make a mirror image of FRA's highway-rail grade crossing database. Using the USDOT National Crossing Inventory Number and NLETS will provide the 1st responder's agency instant access to FRA's database.

More Resources

FRA has created "Rail Safety for Emergency Responders" informational video series. Visit <https://www.fra.dot.gov/Page/P0850> or contact Michail Grizkewitsch via email at: michail.grizkewitsch@dot.gov for further information.